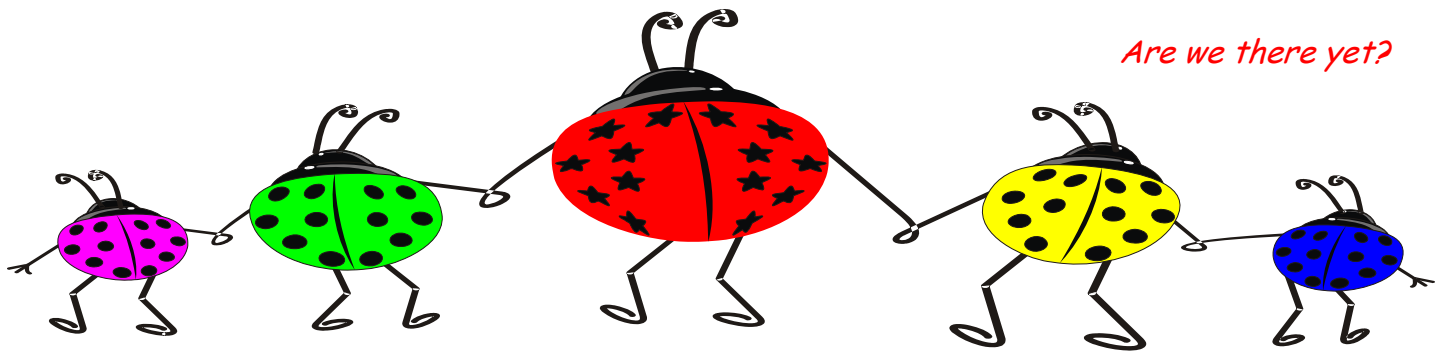


# Henry E. S. Reeves Elementary

## "Academy of Applied Technology"



## Principal's Message

Our students, faculty, and staff have worked hard since the beginning of school. As the 2011 year quickly approaches, everyone will continue to maintain an instructional momentum throughout the course of the year. Since the opening of school, our students have had an array of unique opportunities as it relates to their learning. Our students have established a sense of pride and belief that they can make a difference. With your continued support as parents, their belief will soon become a reality.

Our 3rd through 5th grade students have been taking a series of assessments in reading, mathematics and science. When I compared the District's Baseline Assessment, which was administered in August, to the Interim Assessment, which was administered in November, students in 3rd through 5th grade have increased their proficiency by **24%** in reading, **26%** in mathematics, and **39%** in science (5th grade only). As I conduct data conferences with students and teachers, it is obvious that students are owning their learning and teachers are owning their teaching. Educational reform is truly happening at Henry E. S. Reeves Elementary. If someone asks, "**Are we there yet?**" My response will be, "**We are certainly well on our way.**"

Yours truly,  
Julian E. Gibbs  
Principal



2005 NW 111th Street

Miami, FL 33167

<http://henryreeves.dadeschools.net>



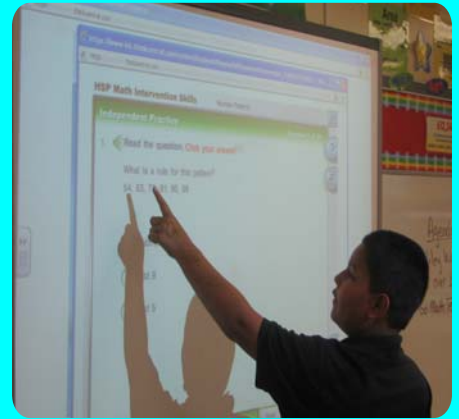


Miami-Dade College visits  
Henry E. S. Reeves Elementary  
"Technology in the Classrooms"

Introduction to Educational Technology EME 204040



Professor Scott and his students from Miami-Dade College visited Henry E. S. Reeves to see how technology is infused into the core curriculum.



Miami-Dade College students witnessed students utilizing the smart board in a math classroom.

**Teachers who own their teaching.**



Ms. Wright-Harris uses a more "hands-on" approach when implementing differentiated instruction during small group instruction.

**Students who own their learning.**



A student shares his math portfolio which contains work samples and how he graphed his results on the monthly assessments.

On Wednesday, November 24th, our 5th grade team celebrated their 3rd Annual Thanksgiving Feast. This was a time for our students to get together and celebrate Thanksgiving with their classmates. More than one hundred thirty-five 5th grade students were in attendance along with parents and teachers. This is always a festive occasion and a special thanks to Ms. Pierre and her team for chairing the event.

Fifth grade teachers and students celebrating Thanksgiving.



Red Lobster



# Principal's A1A Honor Roll



Students who achieved the Principal's Honor Roll were invited to Red Lobster. The Principal's Honor Roll requires an "A1A" in all subjects. A special thanks to Mr. Julian E. Gibbs, Principal, and Mr. Marvin Wade, Red Lobster Assistant Manager, for funding this event. Keep up the good work!

# Here Comes Santa



On Friday, December 3rd, Henry E. S. Reeves Elementary had a special guest who visited our primary classrooms. You can be sure that Santa was definitely checking his list twice to see who's been naughty or nice! The administration would like to say thank you to our parent volunteers, Mr. and Ms. Barber.

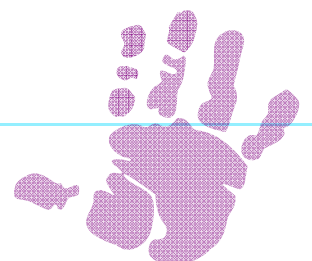


Mark your calendar



# FCAT 2.0

- January 19, 2011** Fourth grade students will be administered a sample writing prompt through Learning Express Folio.
- February 9, 2011** FCAT Family Night Out 6:00 p.m. until 8:00 p.m.
- February 23, 2011** Fourth grade FCAT Writing Boot Camp 2:30 p.m. until 5:30 p.m.
- March 2, 2011** FCAT Writes (4th grade only)
- March 9, 2011** FCAT Family Night Out 6:00 p.m. until 8:00 p.m.
- April 6, 2011** FCAT PEP RALLY
- April 11th—15th** FCAT Testing (3rd through 5th grade)
- April 18th-22nd** SAT (1st and 2nd grade)



Z V C K C F U L K J X F B R Z W T X L M V G P E M  
O T C A F Q I N U W P P J G E P I D U T O A E L I  
C P U U S T C G F N M A Z D P T V D R N L H R G N  
P S X O E B L K I U C C T O E P E A T Y U T S N F  
E U G R N Z A O W E A R C T S S U M O H M I P A V  
R M A L T V N X N T H E M E E Q C I O B E O E T K  
C R Q R H O O T W L X P B M H R U R A L V M C C I  
Y V U R G N I C O N C L U S I O N S I D I E T E L  
S O M U I M T K E E W O C S T N E M I P R K I R O  
H I T L E J A W H V T T U F A L A O N A T G V I G  
E X M T H I M B T O A M U B L R Z O P M R I E K R  
P L E I N C R O N O M L V T G E T M U Q V R V N A  
C R G S L L O E F A O J U O P R O H P A T E M E M  
C U X N H E F I R G I F L A T C E F F E Y N O R I  
Y Z Q H A T N Y M I L E R M T D I C T I O N R T W  
S R Z G G I I F X Y L T J A N E P O O U N D R B E  
L E E W R E R E D L F B N R R F M S D O U L E U C  
S G S T T R J T A M V D T G G W Y G E C F L T A T  
X M Z U I N X R W Y N G S B B N N I M J G U E R P  
Z R N U B L A E C N E R E F N I O P Q C Q E M E H  
I I O W J P A D L Y Q N T U L T T L I P S K O A G  
M T P Q C O N T R A S T T I S G N A L N K G U I A  
X M L G Y P S D F C E E I Y X L A O W A T Y W A L  
L Q V U K D U S D K K I N A G G C N D P G N G K S  
W P M P Z X S C Q B N U G D Y R H O J H W W S R R



**FCAT  
VOCABULARY  
BUZZ WORDS**

ANTONYM	AREA	BASE
CAUSE	CENTIMETER	COMPARE
CONCLUSIONS	CONTRAST	CUP
DESCRIPTIVE	DICTION	EFFECT
EVALUATE	FACT	FOOT
GALLON	GRAM	HEIGHT
HOUR	INFERENCE	INFORMATIONAL
WIDTH	KILOGRAM	KILOMETER
LITER	LITERARY	METAPHOR
METER	MILE	MINUTE
PARALLELOGRAM	PATTERN	TRIANGLE
PINT	PLOT	POUND
QUART	RECTANGLE	SETTING
SIMILE	SUMMARY	THEME